

New Advances in

# Inflammatory Bowel Disease

September 10 – 11, 2011

Hyatt Regency La Jolla at Aventine • San Diego, CA

## CONFERENCE HIGHLIGHTS

- **Plenary talks from industry leading experts**
- **Extended question and answer time with expert faculty**
- **Interactive case presentations and discussion**
- **Networking opportunities**
- **DVD containing synchronized audio and final presentations sent to all attendees 4-6 weeks after the conference**

More than 40 national CME conferences, in over 15 specialty areas.

Scripps Conference Services & CME - [www.scripps.org/conferenceservices](http://www.scripps.org/conferenceservices)

# Course Information

## OVERVIEW

Crohn's disease and ulcerative colitis, collectively known as Inflammatory Bowel Disease (IBD), are considered chronic and lifelong conditions for which there is currently no cure. It is estimated that more than one million people in the United States are affected by the disease. The New Advances in Inflammatory Bowel Disease conference will highlight the latest concepts in the diagnosis and treatment of IBD. Disease complications, social and psychological side effects, special population considerations, and surgical options will also be discussed. The course will be taught by nationally known experts who are actively involved in clinical trials and studies related to the management of Crohn's and colitis. Physicians will be provided with the necessary context to integrate the relevant information into their practices to improve the quality of life for their afflicted patients.

## TARGET AUDIENCE

- Gastroenterologists
- Residents & Fellows
- Internists
- Nurses/Nurse Practitioners
- Colon & Rectal Surgeons
- Physician Assistants

## EDUCATIONAL OBJECTIVES

After attending this activity, participants should be able to:

- Incorporate new diagnostic methods into practice for inflammatory bowel disease.
- Evaluate current and future treatment options for Crohn's disease and ulcerative colitis.
- Discuss the difference between pediatric and adult IBD treatment.
- Employ strategies to balance medication costs with patient compliance and outcomes.
- Recognize the various social and psychological side effects on patients with IBD.
- Analyze the value of serologic and genetic testing in inflammatory bowel disease.
- Assess surgical options for the treatment of inflammatory bowel disease.
- Manage post-operative patients effectively to minimize potential complications.



## ACCREDITATION, DISCLOSURE & ABOUT SCRIPPS

### Accreditation

Scripps Health is accredited by the Accreditation Council for Continuing Medical Education (ACCME) to provide continuing medical education for physicians.

Scripps Health designates this live activity for a maximum of 10 *AMA PRA Category 1 Credit(s)*<sup>™</sup>. Physicians should only claim credit commensurate with the extent of their participation in the activity.

Documentation of awarded credit is provided for registered attendees in exchange for completed activity evaluation. Certificates of attendance are available, upon request, at the end of the course.

### California State Board of Registered Nurses

The California State Board of Registered Nurses (BRN) accepts *AMA PRA Category 1 Credit(s)*<sup>™</sup> as meeting continuing education requirements for license renewal. Most state Boards of Registered Nurses accept *AMA PRA Category 1 Credit(s)*<sup>™</sup> as meeting continuing education requirements for license renewal. Nurses should contact their state board regarding use of CME credit.

### American Academy of Physician Assistants

The American Academy of Physician Assistants (AAPA) accepts Category 1 credit from *AMA PRA Category 1 CME* organizations accredited by the ACCME.

### Commercial Support

This course is supported, in part, by educational grants from industry, in accordance with ACCME accreditation Standards for Commercial Support. At the time of printing, a complete listing of commercial supporters was not available. Appropriate acknowledgement will be given to all supporters at the time of the educational activity.

### Cultural and Linguistic Competency

This activity is in compliance with California Assembly Bill 1195 which requires that all CME activities comprising a patient care element include curriculum addressing the topic of cultural and linguistic competency. The intent of this bill is to ensure that health care professionals are able to meet the cultural and linguistic concerns of a diverse patient population through effective and appropriate professional development. Cultural and linguistic competency was incorporated into the planning of this activity.

### About Scripps

Scripps Health, a nonprofit health care system based in San Diego, California, includes more than 2,600 affiliated physicians and 12,000 employees at five acute-care hospital campuses, home health care services and a network of clinics, physician offices and outpatient centers. Scripps is committed to contributing to the future of medicine through its clinical research trials and graduate medical education programs. More information can be found at [www.scripps.org](http://www.scripps.org).

Scripps Conference Services & CME, which offers more than 40 nationally recognized annual conferences in over 15 specialty areas, is committed to providing exceptional educational courses for physicians and other health care professionals. More information and conference brochure downloads are available at [www.scripps.org/conferenceservices](http://www.scripps.org/conferenceservices).

# Faculty

## COURSE DIRECTORS

### David M. Roseman, MD, FACP, AGAF

Former Chief of Staff  
Scripps Memorial Hospital La Jolla  
Clinical Professor of Medicine  
University of California, San Diego  
La Jolla, California

### M. Jonathan Worsey, MD, FRCS (eng.), FACS

Colon and Rectal Surgeon  
Advanced Surgical Associates  
of San Diego  
La Jolla, California

## GUEST FACULTY

### David G. Binion, MD, AGAF

Co-Director  
Inflammatory Bowel Disease Center  
Director, Translational IBD Research  
Visiting Professor of Medicine  
Division of Gastroenterology,  
Hepatology and Nutrition  
University of Pittsburgh School of Medicine  
Pittsburgh, Pennsylvania

### Russell D. Cohen, MD, FACP, AGAF

Associate Professor of Medicine  
Pritzker School of Medicine  
Co-Director  
Inflammatory Bowel Disease Center  
The University of Chicago Medical Center  
Chicago, Illinois

### Scott Plevy, MD

Associate Professor of Medicine,  
Microbiology & Immunology  
University of North Carolina  
School of Medicine  
Division of Gastroenterology and Hepatology  
Inflammatory Bowel Disease Center  
Chapel Hill, North Carolina

### Shervin Rabizadeh, MD, MBA

Attending Physician  
Pediatric Gastroenterology  
Pediatric Inflammatory Bowel Disease Center  
Cedars-Sinai Medical Center  
Los Angeles, California

### Miguel D. Regueiro, MD

Associate Professor of Medicine  
Co-Director  
Inflammatory Bowel Disease Center  
Director, Gastroenterology, Hepatology, and  
Nutrition Fellowship  
University of Pittsburgh School of Medicine  
Pittsburgh, Pennsylvania

### David T. Rubin, MD, FACP, AGAF

Associate Professor of Medicine  
Co-Director  
Inflammatory Bowel Disease Center  
Program Director, Fellowship in  
Gastroenterology, Hepatology and Nutrition  
The University of Chicago Medical Center  
Chicago, Illinois

### William J. Sandborn, MD, FACP

Chief, Division of Gastroenterology  
University of California, San Diego  
La Jolla, California

### Anthony J. Sengaoire, MD, MS, MBA, FACS, FASCRS

Professor and Division Chief  
Charles W. and Carolyn Costello Chair  
for Colorectal Diseases  
Department of Surgery/  
Division of Colorectal Surgery  
Keck School of Medicine  
University of Southern California  
Los Angeles, California

### Mark S. Silverberg, MD, PhD, FRCPC

Associate Professor of Medicine  
University of Toronto  
Division of Gastroenterology  
Mount Sinai Hospital  
Toronto, Ontario, Canada

### Eva M. Szigethy, MD, PhD

Assistant Professor of Psychiatry and Pediatrics  
University of Pittsburgh  
Division of Pediatric Gastroenterology  
Children's Hospital of Pittsburgh  
Pittsburgh, Pennsylvania

### William J. Tremaine, MD, FACP

Professor of Medicine  
Department of Gastroenterology  
and Hepatology  
Mayo Clinic College of Medicine  
Rochester, Minnesota

### Fernando S. Velayos, MD, MPH

Associate Director of Translational Research  
UCSF Center for Crohn's and Colitis  
Associate Professor of Medicine  
Division of Gastroenterology  
University of California, San Francisco  
San Francisco, California

## Faculty Disclosure

In accordance with the ACCME Standards for Commercial Support, course directors, planning committees, faculty and all others in control of the educational content of the CME activity must disclose all relevant financial relationships with any commercial interest that they or their spouse/partner may have had within the past 12 months. If an individual refuses to disclose relevant financial relationships, they will be disqualified from being a part of the planning and implementation of this CME activity. Employees of a commercial interest with business lines or products relating to the content of the CME activity will not participate in the planning or any accredited portion of the conference. Disclosure will be made to all participants at the conference location, prior to the educational activity commencement.

# Conference Location & Hotel Information

## Hyatt Regency La Jolla at Aventine

3777 La Jolla Village Drive, San Diego, California 92122  
Reservations: 800-233-1234; Hotel Direct: 858-552-1234  
Web: [hyattregencylajolla.com](http://hyattregencylajolla.com)

Only a few miles from downtown San Diego and minutes away from downtown La Jolla, the unique Hyatt Regency La Jolla at Aventine is defined by the dichotomy that is this town – the quaint charm of a European village mingled with the energetic high style you'd expect from Southern California. Situated on 11 acres, the lush grounds also offer the perfect setting for a jog or hike. When you're ready to explore the area, the knowledgeable concierge is on hand to assist you with planning of your itinerary to make the most of your stay at this Four-Diamond La Jolla California hotel.



## Rates & Reservations

We are fortunate to have obtained special low rates at the hotel starting at \$169 per night (plus tax and parking). This low rate also includes:

- Complimentary internet access in guestrooms
- Discounted day and overnight self-parking
- Discounted access to The Sporting Club®
- 10% discount on hotel spa services

**Make your reservations early!** A block of rooms is being held for Scripps until August 19, 2011. After August 19, 2011 reservations will be accepted on a space and rate availability basis only. Please make your own reservations and be sure to mention the Scripps IBD Conference to receive the reduced rate and conference amenities listed above.

**Please note:** Attendees who book their room through an online third party service (Hotels.com®, Expedia.com®, Priceline.com®, etc.) are not eligible to receive the amenities listed above.



# PROGRAM

## SATURDAY, SEPTEMBER 10, 2011

- 7:30 a.m. Registration, Continental Breakfast & View Exhibits
- 7:55 a.m. Welcome & Introductions
- 8 a.m. **Diagnosing and Managing Crohn's Disease and Ulcerative Colitis**  
*William J. Tremaine, MD*
- 8:30 a.m. **Current and Future Therapies: What the Clinician Has To Look Forward To**  
*William J. Sandborn, MD*
- 9 a.m. **Is Pediatric IBD Treatment Different Than Adult IBD Treatment?**  
*Shervin Rabizadeh, MD*
- 9:30 a.m. **Panel Discussion / Q&A**  
*Drs. Tremaine, Sandborn and Rabizadeh*
- 9:45 a.m. Break & View Exhibits
- 10:15 a.m. **Maximizing the Effect of Biologics in Inflammatory Bowel Disease**  
*David G. Binion, MD*
- 10:45 a.m. **Managing Hospitalized Patients with Steroid-Refractory Ulcerative Colitis**  
*Scott Plevy, MD*
- 11:15 a.m. **Approaches to Polyps and Raised Lesions in Inflammatory Bowel Disease**  
*David T. Rubin, MD*
- 11:45 a.m. **Panel Discussion / Q&A**  
*Drs. Binion, Plevy and Rubin*
- Noon Lunch
- 1 p.m. **Recognizing and Preventing Side Effects of IBD Therapy**  
*Fernando S. Velayos, MD, MPH*
- 1:30 p.m. **Balancing Medication Costs with Patient Compliance and Outcomes**  
*Russell D. Cohen, MD*
- 2 p.m. **Psychological and Social Side Effects on Patients with Inflammatory Bowel Disease**  
*Eva M. Szigethy, MD, PhD*

- 2:30 p.m. **Panel Discussion / Q&A**  
*Drs. Velayos, Cohen and Szigethy*
- 2:45 p.m. Break & View Exhibits
- 3:15 p.m. **Case Presentations**  
*All Faculty*
- 4:30 p.m. Adjourn

## SUNDAY, SEPTEMBER 11, 2011

- 7:30 a.m. Continental Breakfast & View Exhibits
- 8 a.m. **What the Surgeon Wants the Gastroenterologist to Know**  
*Anthony J. Senagore, MD*
- 8:30 a.m. **Determining Which Therapies Should or Should Not Be Used After Ileocolic Resection**  
*Miguel D. Regueiro, MD*
- 9 a.m. **Should the Endpoint of Therapy Be Mucosal Healing or the Clinical Well-Being of the Patient?**  
*David T. Rubin, MD*
- 9:30 a.m. **Panel Discussion / Q&A**  
*Drs. Senagore, Regueiro and Rubin*
- 9:45 a.m. Break & View Exhibits
- 10:15 a.m. **Analyzing the Practical Value of Serologic and Genetic Testing in Inflammatory Bowel Disease**  
*Mark S. Silverberg, MD*
- 10:45 a.m. **Avoiding Malpractice Lawsuits in IBD: Practical Advice**  
*David G. Binion, MD*
- 11:15 a.m. **Panel Discussion / Q&A**  
*Drs. Silverberg and Binion*
- 11:30 a.m. **Case Presentations**  
*All Faculty*
- Noon Final Adjournment

# New Advances in Inflammatory Bowel Disease

September 10 – 11, 2011 • Hyatt Regency La Jolla at Aventine • San Diego, CA

## CONFERENCE FEES

**Space is limited, so register early!**

**Included:** Course tuition, breakfasts, breaks, lunch, syllabus, and course DVD (audio and presentations, mailed 4-6 weeks after the conference)

**Not Included:** Travel costs, lodging, parking, and dinners

### Main Conference

	Thru Aug 8	Aug 9 - Sept 7	On-site After Sept 7
Physicians	\$235	\$260	\$285
Other Health Care Professionals <i>(nurses, fellows, residents, active duty military, etc.)</i>	\$175	\$200	\$225

**Please print clearly. Should we have any conference communications or updates please provide your direct contact information.**

FIRST, MI, LAST NAME										DEGREE (MD, DO, PHD, RN, ETC)									
BADGE NAME (IF DIFFERENT FROM ABOVE)																			
AFFILIATION/HOSPITAL/COMPANY										SPECIALTY									
DIRECT MAILING ADDRESS																			
CITY/STATE/ZIP																			
DIRECT TELEPHONE										FAX									
EMAIL																			

I have read and agree to the Attendee Cancellation, Substitution, and Refund Policy.



PLEASE INDICATE ANY SPECIAL NEEDS (INCLUDING DIETARY RESTRICTIONS): *Special requests will be considered and accommodated in full compliance with the Americans with Disabilities Act (ADA).*

Office Use Only:	Date Received	Amount	Check No. / Approval CD	Confirmation Sent	Initials

### PAYMENT METHOD

Check Please make checks payable to Scripps (in U.S. dollars only).

Visa  MasterCard  Amex  Discover

If paying by credit card, please complete the information below.

CREDIT CARD NUMBER															EXPIRATION DATE				
NAME ON CARD																			
BILLING ADDRESS IF DIFFERENT FROM ABOVE																			

AUTHORIZED SIGNATURE

### Four Easy Ways to Register

Online scripps.org/conferenceservices  
 Fax 858-652-5565  
 Phone 858-652-5400  
 Mail Scripps Conference Services & CME  
 IBD Conference  
 11025 North Torrey Pines Rd.  
 Suite 200, Maildrop: SCRC 200  
 La Jolla, California 92037

### Questions

Contact Scripps Conference Services & CME  
 Phone 858-652-5400  
 Email med.edu@scrippshealth.org

### Attendance Policies

#### Registration Confirmation

A confirmation letter will be e-mailed or mailed to you upon receipt of the conference registration form and payment. If you have not received it within two weeks, please contact the Scripps Conference Services & CME office.

#### Attendee Cancellation, Substitution, Refund

The course tuition is refundable, minus a **\$75** processing fee, if your cancellation is received in writing no later than **Friday, September 2, 2011**. Attendee substitutions are allowed, but notification must be made in writing by **September 2, 2011**. After this date, under no circumstances will refunds, credits, or substitutions be granted. No refunds or credits will be given to "no shows."

#### Guest Attendance Policy

All conference activities (including educational sessions, meal functions, exhibit hall, etc.) are exclusively reserved for conference attendees. Non-registered guests (including children, family members, colleagues, etc.) are not allowed in the conference areas. Badges provided at registration are required for entrance into all functions and will be strictly enforced.

#### Scripps Conference Modification or Cancellation

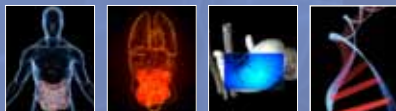
Scripps reserves the right to modify the course's schedule or program as necessary. Scripps also reserves the right to cancel this conference, in which case a full refund of the registration fee will be provided. We are unable to refund any travel costs (flight, hotel, etc.) in the case of Scripps cancellation.

#### Recording and Photography Clause

Scripps reserves exclusive rights to record (audio and video) and/or photograph all conference proceedings for use in marketing materials, presentations and course content sales.



Scripps Conference Services & CME  
11025 N. Torrey Pines Road  
Suite 200, Maildrop: SCRC 200  
La Jolla, California 92037



New Advances in  
**Inflammatory  
Bowel Disease**

**September 10 – 11, 2011**

Hyatt Regency La Jolla at Aventine  
San Diego, CA



# JOIN US!



New Advances in  
**Inflammatory Bowel Disease**

**September 10 – 11, 2011**

Hyatt Regency La Jolla at Aventine • San Diego, CA

## Comments from 2010

- Very complete approach, and quite practical for the GI clinician.
- Well planned conference in an intimate setting and excellent presentation of cases.
- Excellent speakers who not only know a lot but deliver talks well.
- The best IBD meeting I have attended.