

INAUGURAL

# Eosinophilic Esophagitis & Eosinophilic Gastrointestinal Disease Conference

**August 24, 2024**

Hyatt Regency La Jolla at Aventine  
*San Diego, California*

## Course Overview

The Scripps Inaugural Eosinophilic Esophagitis & Eosinophilic Gastrointestinal Disease Conference is a new full-day event designed to provide physicians and other health care providers with updates on the latest advances in eosinophilic esophagitis (EoE) and other eosinophilic gastrointestinal disorders (EGIDs). In this comprehensive educational course, clinical experts will review a range of practice changing developments from the perspectives of multiple specialties. Presentations will cover a full spectrum of relevant topics including pathogenesis, epidemiology, dietary interventions, current and emerging medical therapies, esophageal dilation in EoE, differentiating EGIDs from IBD, and special issues such as management of EGIDs in adolescents and transition of care. In addition, case-based reviews will provide insights into the tailored management of individual patients. Health care providers who attend this educational conference will leave better prepared to provide optimal care to patients with EoE/EGIDs and ultimately improve patient outcomes.

## Educational Objectives

**After attending this live activity, participants should be able to:**

- Identify patients with clinical signs and symptoms suggestive of EoE/EGIDs in order to facilitate a timely diagnosis.
- Apply appropriate diagnostic techniques in the evaluation of patients with suspected EoE/EGIDs.
- Integrate evidence-based treatment strategies for EoE/EGIDs into clinical practice to optimize patient outcomes and clinical care.
- Evaluate the latest advances in EoE/EGID research and their implications for patient care.
- Implement multidisciplinary collaboration and shared decision making into the management of complex EoE/EGID patient cases.

### Target Audience

- Gastroenterologists
- Allergist/Immunologists
- Radiologists
- Pathologists
- Internists
- Pediatricians and Family Practice Physicians
- Nurse Practitioners, Physician Assistants, Nurses
- Pharmacists
- Residents and Fellows

## Accreditation and Disclosure

### Physicians

Scripps Health is accredited by the Accreditation Council for Continuing Medical Education (ACCME) to provide continuing medical education for physicians.

Scripps Health designates this live activity for a maximum of 7 *AMA PRA Category 1 Credit(s)*<sup>™</sup>. Physicians should only claim credit commensurate with the extent of their participation in the activity.

### Maintenance of Certification

This CME activity is offering Maintenance of Certification (MOC) points for members of the **American Board of Internal Medicine** and the **American Board of Pathology**. Visit the course website for additional details on how points will be awarded.

### Nurses and Nurse Practitioners

For the purpose of recertification, the American Nurses Credentialing Center accepts *AMA PRA Category 1 Credit(s)*<sup>™</sup> issued by organizations accredited by the ACCME.

The American Academy of Nurse Practitioners Certified Program (AANPCP) and the American Association of Nurse Practitioners (AANP) accept *AMA PRA Category 1 Credit(s)*<sup>™</sup> from organizations accredited by the ACCME.

### Physician Assistants

PAs may claim a maximum of 7 Category 1 credits for completing this activity. NCCPA accepts *AMA PRA Category 1 Credit(s)*<sup>™</sup> from organizations accredited by the ACCME.

### Pharmacists

The California Board of Pharmacy accepts as continuing professional education those courses that meet the standard of relevance to pharmacy practice and have been approved for *AMA PRA Category 1 Credit(s)*<sup>™</sup>.

### Commercial Support

This course is supported, in part, by educational grants from industry. In accordance with the ACCME Standards for Integrity and Independence in Accredited Continuing Education, a complete list of commercial support received will be provided to all learners who participate in the continuing education activity. For more information: [www.accme.org/standards](http://www.accme.org/standards).



## Conference Co-Directors

### **Fouad Moawad, MD, FACG**

Medical Director, Anderson Medical Pavilion  
Associate Professor of Medicine  
Division of Gastroenterology  
Scripps Clinic  
La Jolla, California

### **Quan Nhu, MD, PhD**

Clinical Assistant Professor of Medicine  
Division of Gastroenterology & Hepatology  
Scripps Clinic  
Assistant Professor of Molecular Medicine  
Head, Eosinophilic Esophagitis Translational Research Laboratory  
Scripps Research Institute  
La Jolla, California

### **Andrew White, MD, FAAAAI, FAAAAI**

Director, Aspirin Exacerbated Respiratory Disease Clinic  
Training Program Director  
Division of Allergy, Asthma and Immunology  
Scripps Clinic  
San Diego, California

## Conference Faculty

### **Seema Aceves, MD, PhD**

Director, Eosinophilic Gastrointestinal Disorders Clinic  
MRD Endowed Chair in Pediatrics  
Professor of Pediatrics and Medicine  
Division of Allergy, Immunology  
University of California, San Diego  
Rady Children's Hospital  
San Diego, California

### **Mazer Ally, MD, FAGA, FACG**

Clinical Associate Professor of Medicine  
Division of Gastroenterology & Hepatology  
Scripps Clinic  
Oceanside, California

## Faculty Disclosure

In accordance with the ACCME Standards for Integrity and Independence in Accredited Continuing Education, course directors, planners, moderators, faculty, and all others in control of the educational content of the continuing education activity must disclose all financial relationships with ineligible companies that they may have had within the past 24 months. If an individual refuses to disclose financial relationships, they will be disqualified from being a part of the planning and implementation of the activity. Owners and/or employees of an ineligible company with business lines or products relating to the content of the activity will not be permitted to participate in the planning or execution of any accredited program. All relevant financial relationships with ineligible companies listed for individuals in control of content have been mitigated.

*A complete listing of faculty disclosures associated with this program can be found on the conference website:*

[www.scripps.org/egdcme](http://www.scripps.org/egdcme).

## Conference Faculty (continued)

### **Walter Coyle, MD, FASGE, FACG**

Head, Division of Gastroenterology & Hepatology  
Therapeutic Endoscopy  
Scripps Clinic  
La Jolla, California

### **Nirmala Gonsalves, MD**

Professor of Medicine, Division of Gastroenterology & Hepatology  
Co-Director, Eosinophilic Gastrointestinal Disorders Program  
Northwestern University Feinberg School of Medicine  
Chicago, Illinois

### **Jenny Huang, MD**

Clinical Fellow  
Division of Allergy, Asthma and Immunology  
Scripps Clinic  
La Jolla, California

### **Amiko Uchida, MD**

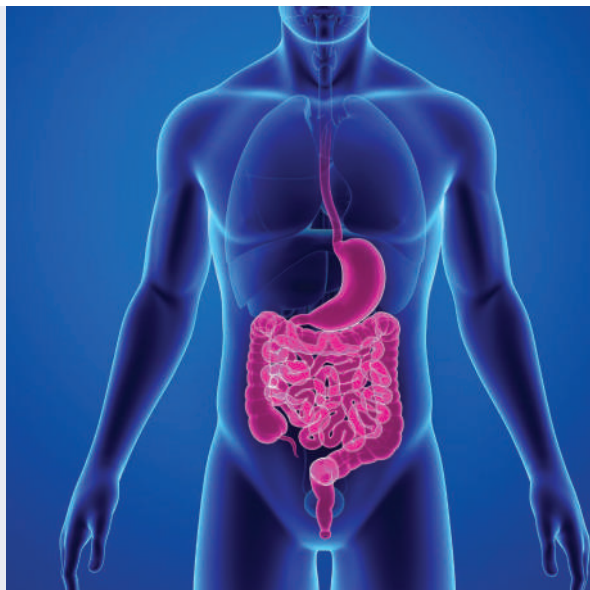
Assistant Professor of Medicine  
Co-Director of the Multidisciplinary EoE Clinic  
University of Utah  
Salt Lake City, Utah

### **Evan Wilder, MD**

Clinical Fellow  
Division of Gastroenterology & Hepatology  
Scripps Clinic  
San Diego, California

### **Han Zhang, MD**

Clinical Instructor of Medicine  
Division of Gastroenterology & Hepatology  
Motility and Esophageal Disease  
Scripps Clinic  
La Jolla, California



# CONFERENCE AGENDA

## Saturday, August 24, 2024

7 a.m. Registration, Breakfast & View Exhibits

7:55 a.m. **Welcome & Educational Overview**

### SESSION I

#### Eosinophilic Esophagitis (EoE)

8 a.m. **Historical Perspectives and Evolving Epidemiology**

Walter Coyle, MD

8:20 a.m. **Pathogenesis and Emerging Concepts**

Seema Aceves, MD, PhD

8:50 a.m. **Non-biologic Medical Therapies: Proton Pump Inhibitors and Topical Corticosteroids**

Han Zhang, MD

9:20 a.m. **Elimination Diet Therapy**

Nirmala Gonsalves, MD

9:50 a.m. **Panel Discussion/Q&A**

10:10 a.m. Break & View Exhibits

### SESSION II

#### Eosinophilic Esophagitis (EoE)

10:40 a.m. **Biologic and Emerging Therapies**

Quan Nhu, MD, PhD

11 a.m. **Should all Patients be on Maintenance Therapy?**

Amiko Uchida, MD

11:25 a.m. **Safety and Efficacy of Esophageal Dilation**

Fouad Moawad, MD

11:50 a.m. **Panel Discussion/Q&A**

12:15-1 p.m. *Non-CME Lunch Symposium  
Supported by Regeneron and Sanofi*

*Topics, times, and speakers are subject to change*

### SESSION III

#### Eosinophilic Esophagitis (EoE)

1 p.m. **Comorbidities and the Allergic Spectrum in Pediatric and Adult EoE Patients: A Conversation**

Seema Aceves, MD, PhD

Andrew White, MD

1:25 p.m. **Role of the Allergist in EoE Management**

Andrew White, MD

### SESSION IV

#### Eosinophilic Gastrointestinal Disorders (EGIDs)

1:50 p.m. **Non-EoE EGIDs: Making the Diagnosis**

Nirmala Gonsalves, MD

2:15 p.m. **EGID versus Inflammatory Bowel Disease**

Mazer Ally, MD

2:40 p.m. **Current and Pipeline Therapies: A GI & Allergy Conversation**

Quan Nhu, MD, PhD

Andrew White, MD

3:05 p.m. Break & View Exhibits

### SESSION V

#### Eosinophilic Gastrointestinal Disorders (EGIDs)

3:20 p.m. **EGID: Perspectives from a Physician as a Patient**

Jenny Huang, MD

3:40 p.m. **Case-based Review of Complex EoE/EGID Patients**

Drs. Aceves, Ally, Coyle, Gonsalves, Huang, Moawad, Nhu, Uchida, White, Wilder, Zhang

4:30 p.m. **EoE/EGID in Adolescents and Transition of Care**

Drs. Aceves, Ally, Coyle, Gonsalves, Moawad, Nhu, Uchida, White, Zhang

4:45 p.m. Adjourn

### Registration Rates

	Thru Jul 8	Jul 9-Aug 22	After Aug 22
<b>Physicians (MD, DO, MBBS)</b>	\$275	\$325	\$375
<b>RN, NP, PA, Other</b>	\$225	\$275	\$325
<b>Students, Residents, Fellows</b>	\$100	\$125	\$150

# CONFERENCE LOCATION & HOTEL ACCOMMODATIONS

## Hyatt Regency La Jolla at Aventine

3777 La Jolla Village Drive  
San Diego, California 92122  
Reservations: 888-421-1442  
Phone: 858-552-1234

### Rates and Reservations

**Please make your own hotel reservations** and request the Scripps conference reduced rate of \$219 per night (plus waived destination fee and discounted parking). **Make your reservations early! A block of rooms is being held for us at the special rate of \$219 per night until Friday, August 2, 2024, or until the room block fills, whichever comes first.** After this date, reservations will be accepted on a space and rate availability basis only. Visit the conference website for a link to reserve a discounted room. Attendees who book their room through an online, third-party service are not eligible for room block concessions.

### Conference Fees & Registration

Space is limited, so register early!

#### REGISTER ONLINE

[www.scripps.org/egdcme](http://www.scripps.org/egdcme)

**In-Person Included:** Course tuition, breakfast, breaks, lunch, internet access, electronic course materials, and course recordings

**Not Included:** Travel costs, lodging, parking, and dinner

## ATTENDANCE POLICIES

### Attendee Cancellation, Substitution and Refund

The course tuition is refundable, minus a \$100 processing fee (MD, DO, RN, PA, NP) or a \$25 processing fee (Scripps Employee, Fellow, Resident, Student), if your cancellation is received in writing no later than **Friday, August 9, 2024**. Attendee substitutions are allowed, but notification must be made in writing by **Friday, August 9, 2024**. After this date, under no circumstances will refunds, credits, or substitutions be granted. No refunds or credits will be given to "no shows." No refunds shall be made for cancellations due to inclement weather.

### Scripps Conference Modification or Cancellation

Scripps reserves the right to modify the course's schedule or program as necessary. Scripps also reserves the right to cancel this conference, in which case a full refund of the registration fee will be provided. Attendees who purchase non-refundable airline tickets do so at their own risk. Scripps encourages the purchase of travel insurance as we are unable to refund any travel costs (flight, hotel, etc.) in the case of Scripps cancellation.

### Family and Guest Attendance Policy

All conference activities and meals are exclusively reserved for paid conference attendees. Children and family members are not allowed to attend meal functions or permitted in the meeting space.

### Health and Safety Waiver and Assumption of Risk

By completion and submission of the online registration form, participants certify they have read and fully understand the Health and Safety Waiver and Assumption of Risk Agreement.

### Recording and Photography Clause

Scripps reserves exclusive rights to record (audio and video) and/or photograph all conference proceedings for use in marketing materials, presentations and course content sales.



**Scripps Conference Services & CME**

4275 Campus Point Court, CPB205  
San Diego, California 92121  
858-678-6400  
[www.scripps.org/conferenceservices](http://www.scripps.org/conferenceservices)  
[med.edu@scrippshealth.org](mailto:med.edu@scrippshealth.org)

INAUGURAL

**Eosinophilic Esophagitis &  
Eosinophilic Gastrointestinal  
Disease Conference**

**August 24, 2024**

Hyatt Regency La Jolla at Aventine  
*San Diego, California*

Visit [www.scripps.org/egdcme](http://www.scripps.org/egdcme) for conference updates!